

ASINSA

International Core Foundation
Engineering Program





ASINSA

With a specific focus on Asia, **this two-year program** (undergraduate level) aims to prepare students to join the three-year graduate course in one of the 9 departments of study which then lead to the **INSA 'Diplôme d'ingénieur', internationally recognized as an MSc in Engineering.**



INSA IN FIGURES

6,100 students

28% are international

570 PhD students

680 administrative
and technical staff

740 teacher-researchers

67% students find a job before
graduation

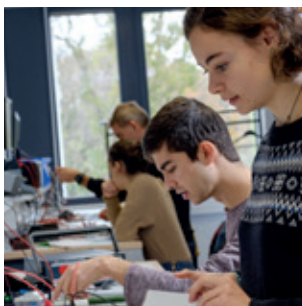
INSA Lyon

Since its foundation in 1957, INSA Lyon – National Institute of Science & Technology – has been one of France's leading engineering school with no less than 22 internationally recognized research centers. Combining engineering training **with strong humanist values**, the institute boasts cutting-edge research and close collaboration with industrial partners. **Diversity, excellence, innovation, open-mindedness and high reputation** are **the core values** of the INSA model.

An education model addressing societal challenges

INSA Lyon's educational model promotes cross disciplinary teaching and a diversity of programs **combining sciences, technologies, humanities and soft skills**.

INSA graduates are recognized by employers as proactive, creative and entrepreneurial recruits. Fully aware of a fast-evolving world, they are well prepared to also become **socially responsible professionals** ready to face tomorrow's challenges.



From ASINSA to a MSc Eng. Degree

ASINSA is an international section attached to the **Core Foundation Engineering Program** which gives students a **broad multi-disciplinary education in science, technology and engineering**. The uniqueness of ASINSA lies in its ability to immerse students in a multicultural environment: approximately 40% of the students are from France, while the remaining come from various Asian countries.

After the two-year ASINSA program, students join the three-year postgraduate course in one of the 9 departments of study, leading to an MSc Eng Degree, with the possibility to spend a semester abroad (internship or university exchange) or pursue a double degree.

- Biosciences
- Civil Engineering and Urban Planning
- Electrical Engineering
- Energy and Environmental Engineering
- Industrial Engineering
- Mechanical Engineering
- Materials Science and Engineering
- Computer Science and Information Technology
- Telecommunications



ASINSA program

The two-year foundation course is structured over:

- **4 semesters of 15 weeks each**
(each semester represents approximately 400 - 500 hours of teaching)
- **80% of scientific teaching**
- **20% of non-scientific courses** (languages, sports, Culture, Science and Society, etc.).
- **All courses are taught in French.**
- **French as a Foreign Language (FLE)** is **mandatory** until a certified B2 level is achieved. **English courses** are only available to international students who have reached a certain level in French.
- **Internship in France** for international students.
- **Dedicated modules** such as Theater and Culture, Science, and Society. Additionally, ASINSA students can join their own dedicated association, «Année du Tigre».

ASINSA IN FIGURES

+ 1,600 students have chosen ASINSA over the last 20 years

75 freshmen students per year

50% French students and **50%** Asian students per promotion

Students come from **China, Vietnam, Malaysia, Cambodia, Indonesia.**



Integration to campus life

The INSA campus is based 15-min away from Lyon city center.

Lyon is the **2nd biggest city in France** and was elected several times in a row best student city!

We aim at fostering well-being on our open and dynamic campus.

All year-round students benefit from:

- **110 student clubs and associations**
- **On-campus accommodation and 7/7 catering**
- **24-hour security guaranteed**
- **Medical and psychological assistance at any time**

French as a Foreign Language (FLE)

- French Summer School

Foreign students benefit from a three-week summer school comprising 100 hours of intensive French classes between August and September prior to their 1st year of ASINSA, to facilitate their integration and help them settle smoothly into their new environment.

<https://ecole-ete.insa-lyon.fr/en>

- FLE Courses

Additional French language support is provided to non-French-speaking students throughout the year, with up to 6 hours per week offered.

THE PROFILE WE VALUE

We value applicants with a rigorous curriculum, who are motivated by the cross-cultural aspects of the program, have leadership skills and are open to others.

PREREQUISITES

- **A solid grounding in science** (mathematics, physics and chemistry).
- Studying for or holding **a science-based high school diploma or university entrance examination delivered** by an Asian country
- An A2 level in either French or English is required.

COSTS

We are committed to recruit candidates from different backgrounds and to give all of them an equal opportunity to apply.

Discover our **competitive tuition fees** and **funding opportunities on:**

<https://www.insa-lyon.fr/en/asinsa>

ADMISSION PROCESS

The ASINSA recruitment process is common to the entire INSA Group, which is made up of 7 institutions in France.

Two-phase selection process

> Apply to the INSA Group

To be considered for the ASINSA Lyon program, make sure you specify INSA Lyon in your application.

Depending on your country of origin, applications must be submitted between November and February:

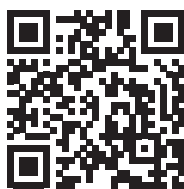
<https://www.insa-lyon.fr/en/asinsa>

> Register on the Study in France platform

<https://www.campusfrance.org/en/application-etudes-en-france-procedure>

A mathematics test as well as a personal interview in English or French can be organized to assess the applicant's level and motivation.





INSA Lyon
Campus LyonTech La Doua

Contact

Richard MOREAU
David ROUMEGOUX
asinsa@insa-lyon.fr

China: asinsa-chine@insa-lyon.cn
Vietnam: vietnam@groupe-insa.fr

+33 (0)4 72 43 60 59



INSA | INSTITUT NATIONAL
DES SCIENCES
APPLIQUÉES
LYON

